



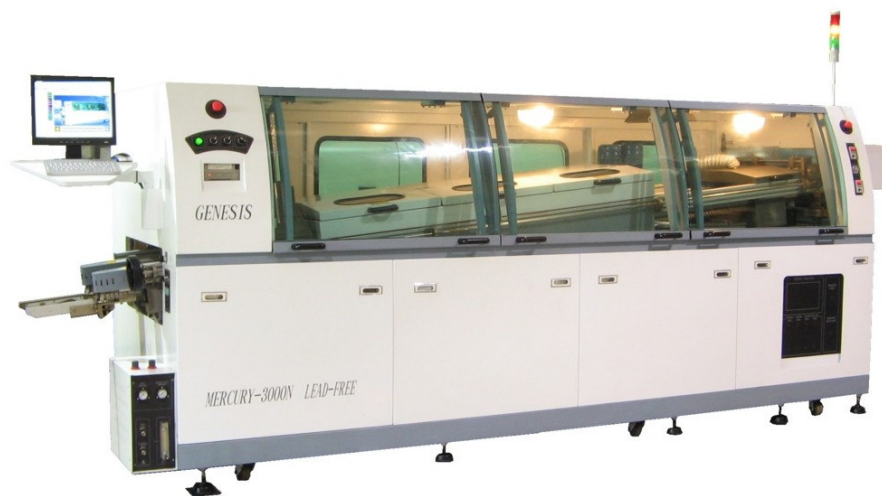
Genesis™

A Genuinely Lead-Free Solution.

Mercury Brochure

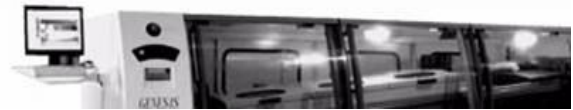
Mercury 3000 Lead-free Wave Solder

Mercury 3000N Lead-free N2 Nitrogen Wave Solder



Mercury™ Series

Lead Free Wave Solder



TITANIUM ALLOY DUAL WAVE SOLDER POT

- ❖ Corrosion resistant, durable, easy to use & less maintenance.
- ❖ Unique & proven Chip Wave nozzle design obtains high performance standard of solderability.
- ❖ Closely constructed dual wave ensures temperature stability.



REDUCE OXIDATION

- ❖ Special motor housing effectively reduces solder's oxidation.



EASY MAINTENANCE

- ❖ Motorize automatic pot adjustments, makes changing-over faster & ease of maintenance, ensures high production uptime.



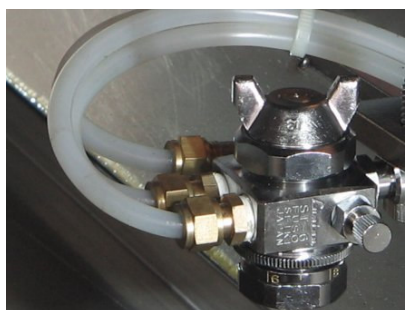
AUTOMATIC SPRAY FLUXER

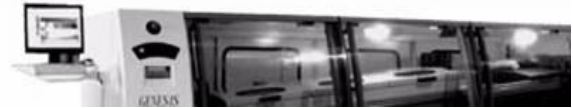
- ❖ Build in Digital controlled Automatic spraying system, powered by reliable PLC and high end industrial PC.
- ❖ User-friendly menu, easy operating.
- ❖ Area of spray is done fully automatic even with changes in conveying speed.
- ❖ PLC controlled powerful exhaust fan to prevent "flux return shower".



FLUXER NOZZLE

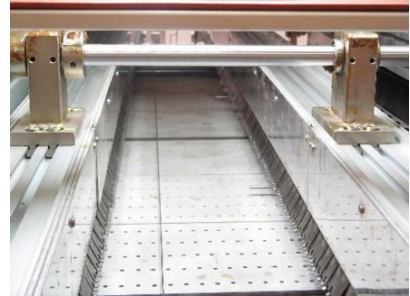
- ❖ High quality LUMINA spray fluxer nozzle





3 PREHEATING ZONE

- ❖ Hot air cast-aluminum plate heaters, PLC and PID precision independent temperature controlled ensure even and consistent heating property and eliminate fire hazard.
- ❖ Isolated zone electric supply through dedicated power breaker, maximize circuit protection



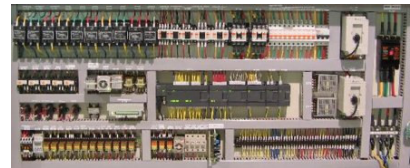
TOP PREHEATER

- ❖ Additional top heater panel at Zone 1, enhances heat capacity in handling dense components products



Electrical control system

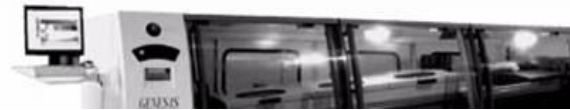
- ❖ Reliable and high performance Siemens PLC, Siemens Temperature Controller provide maximum production uptime.
- ❖ Adopt PC/PPI Protocol
- ❖ Industrial PC



Cooling Zone

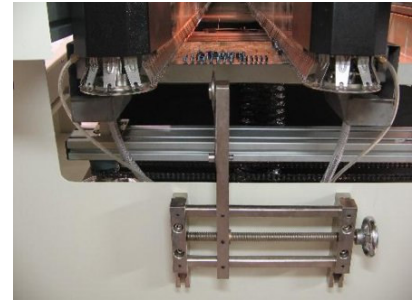
- ❖ 2 stage strong and efficient Air Cooling System, with 1 blower pump & 10 fans.
- ❖ Optional Chiller water cooling for N2 applications.





PCB Center Support System

- ❖ Provides stable support for various thickness & weight of products.



Operational System

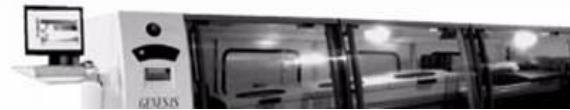
- ❖ Robust and reliable Industrial PC
- ❖ User-Friendly MS Windows 2000 Professional operation interface & Siemens PLC Temperature control & LCD panel monitor.
- ❖ UPS (Uninterrupted Power Supply) equipped ensuring normal operation of computer & control system during external power failure.



Build-In Temperature profiler

- ❖ Test & analysis of temperature profile for optimal process setting





GENESIS™ Mercury 2000/3000/300N Series Technical Specification

Mercury Lead Free Wave Soldering	Model : Mercury 2000	Model : Mercury 3000/3000N
Machine Dimension	4200 (L) * 1400 (W) * 1700 (H)	4620 (L) * 1400 (W) * 1700 (H)
Applicable Solder Type	Leaded / Lead Free Solder Bar	Leaded / Lead Free Solder Bar
PC Board Width	30 ~ 350 mm	30 ~ 350 mm
Computer Control	Industry PC (Windows 2000) + Siemens PLC	Industry PC (Windows 2000) + Siemens PLC
Conveyor Speed	0 ~ 1800 mm / min	0 ~ 1800 mm / min
Conveyor Motor	AC 1 Φ 220V, 60W	AC 1 Φ 220V, 60W
Fluxer Capacity / Pressure	6 litre / 3 ~ 5 bar	25 litre / 3 ~ 5 bar
Pre – Heater	Length 1800 mm . Preheat 1, 2: 2kW * 10 pcs Infra red pipe. Preheat 3: 1kW * 1 pc Philips cesium lamp. Rm Temp. ~ 250°C	Length 1800 mm. Preheat 1 ~ 3: 2kw * 9 pcs Cast-aluminum. Preheat 1 (Top) : 600W * 6 pcs Infra red pipe
Solder Pot Heater	1.2KW *10 pcs Rm Temp. ~ 300°C	1.2 KW * 10 pcs Rm Temp. ~ 300°C
Solder Capacity	Approx 400 kg	Approx 400 kg
Wave Motor	AC 3 Φ 220V 180W * 2pcs	AC 3 Φ 220V, 180W * 2 pcs
Swing Motor	Optional	AC 1 Φ 220V, 25W
Finger Cleaner Pump	AC 1 Φ 220V, 5 W	AC 1 Φ 220V, 5W
Conveyor Direction / Mode	Left – Right (Right – Left Optional)	Left – Right (Right – Left Optional)
Soldering Angle	4° ~ 6°	4° ~ 6°
Power Consumption	3 Φ 415V 50 Hz	3 Φ 415V 50 Hz
Back Up Power	UPS for conveyor & CPU	UPS for conveyor & CPU
Spray Fluxer Movement	Cylinder	Stepping Motor
Net Weight	1500 kg	1820 kg
Motorized Solder Pot	NA	Standard
Hot Air Blower	NA	Standard , AC 1 Φ 220V , 90W * 3 pcs
PCB Board Center Support	Optional	Optional
PC Board Width , 450mm	Optional	Optional
Chiller Cooling System	NA	Optional
O ² Analyzer	NA	Optional