



**A Genuinely Lead-Free Solution.**



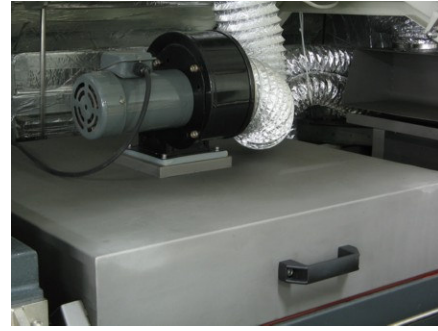
HyperFlo Series

**Lead Free Force Convection  
Reflow Oven**



Module design Upper & Lower independently heaters.

Direct-coupled Wind-Wheel (Patent) high speed 2800 rpm & high temperature motor offer high heat convection capability (Optional N2 re-charging protection)



Top force air-cooling system, provide uniform and rapid cooling.



Adopt PC/PPI protocol in PC & PLC communication.  
Stable & trouble-free communication

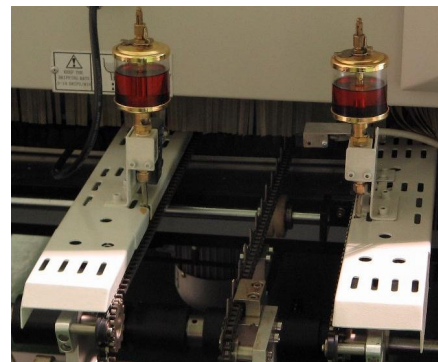


Bottom cooling system, extract all hot air and send to exhaust.

Flux collection system, centralize flux for easy maintenance.

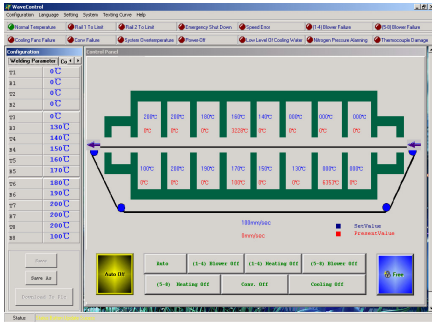


Nitrogen flow meter & Digital oxygen analyser (Optional)



PCB conveyor chain automatic tensioning & automatic drip oil lubrication

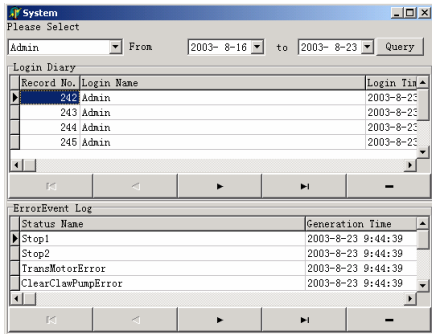
PCB Center Support System (Optional)



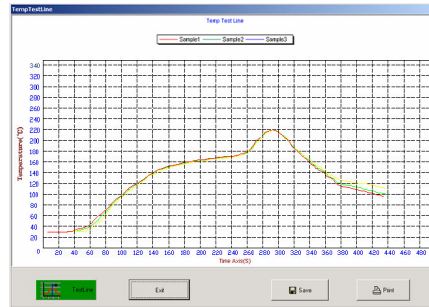
User friendly MS Windows 2000 Professional operation interface. Siemens PLC Temperature Control. LCD Panel Monitor



Water Chilling System, enable tremendous cooling on Lead free Processes.



System log, Operation log, real time monitor, automatic record and storage



Temperature testing & analyse, rate and curve after testing is completed.

Serial Number	Pcb Name	T1	B1	T2	B2	T3	B3
1	pcb1	138	138	178	170	165	16
2	pcb2	178	178	160	160	155	15

PCB Board, Production database, PCB board recording in different model, parameter setting, convenient for user to improve productivity.



Password Protected assurance role definition and safety use.

## **FEATURES**

- MS Window Operation
- Clamshell Air Cylinder opening
- High Mass Heating Technology
- Air or Nitrogen Atmosphere
- Computer close loop control
- Lead-Free Soldering
- SS Mesh & High Temp Quality Chain
- Motorized Rail Width control
- Power Saving Technology
- UPS for conveyor and CPU
- Water Chiller ( Optional )
- Oxygen analyzer ( Optional )
- Dual Rail & Center Support ( Optional )

## **Optional**

- Water Chiller
- Oxygen analyzer
- Dual Rail & Center Support

## GENESIS™ HyperFlo 7/8/10 Series Technical Specification

<b>HyperFlo Lead Free</b>	<b>7 Zone</b>	<b>8 Zone</b>	<b>10 Zone</b>
<b>Machine Dimension L x W x H</b>	5200 (L)*1380(W)*1510(H)	5560 (L)*1500(W)*1510(H)	6260(L)*1500(W)*1510(H)
<b>Applicable Solder Type</b>	Lead Free Solder Paste / No Clean Solder Paste		
<b>Max PCB Board Size</b>	350 X 300 X 30up (Optional Max=450mm)		
<b>Applicable Component</b>	Chip, PLCC, QFP, BGA, CSP, Flip Chip, COB etc.		
<b>Oven Constitution</b>	7 Zone Top, 7 Zone Bottom Convection Heater / Preheater + Cooling System	8 Zone Top, 8 Zone Bottom Convection Heater / Preheater + Cooling System	10 Zone Top, 10 Zone Bottom Convection Heater / Preheater + Cooling System
<b>System Clamshell Opening</b>	Clamshell Motorized cylinder		
<b>Heating Zone Length</b>	2603 mm	2953 mm	3654 mm
<b>Heating System</b>	Individual forced convective heating (Patented Proven Design) ®		
<b>Cooling System</b>	Water / Air Cooling System		
<b>Conveyor Direction / Mode</b>	Left – Right or Right – Left / Combo Conveyor Mesh & Chain Type (Optional Dual Conveyor)		
<b>Conveyor Speed / Height / Wide</b>	Speed: 0 – 1.5m /min	Height: 900± 20mm	Wide: 390mm
<b>Wide Adjustment System</b>	Motorized Width Adjustment		
<b>Temperature Control / Module</b>	PID Microprocessor Controller / Siemens PLC		
<b>Accuracy Temperature Oven / PCB</b>	± 1 Deg ° / ± 2 Deg °		
<b>Power Consumption / Back Up</b>	3 Ø 415V 50Hz / UPS for conveyor chain & CPU		
<b>N2 Consumption / O<sup>2</sup> Consistency</b>	300-500 PPM < 30m3/h	300-500 PPM < 30m3/h	300 – 500 PPM < 35m3/h
<b>Net Weight</b>	Approx. 2520kg	Approx. 2670 kg	Approx. 2870kg
<b>External PCB Cooling Chiller System</b>	Optional Air cooling System / Water Cooling System (optional : Double water cooling)		
<b>N<sup>2</sup> / O<sup>2</sup> (Optional)</b>	N <sup>2</sup> / O <sup>2</sup> Analyses – SPC (Statistical Process Control) Nitrogen System or Portable Nitrogen System		

All Right Reserved


**Hyperflo Series**